



Controll-A-Door P[®]

DIAMOND SERIES

INSTRUCTIONS



www.bnd.com.au

QLD Office: 17 Oasis Court
Clontarf 4019
(07) 3883 0200

NSW Office: 34-36 Marigold Street
Revesby 2212
(02) 9722 5555

VIC/TAS Office: 147-153 Canterbury Road
Kilsyth 3137
(03) 9237 7766

**B&D Doors
New Zealand:** 70 Allens Road
East Tamaki
Auckland, New Zealand
(09) 273 8600
www.bnd.co.nz

SA Office: 23 Frederick Road
Royal Park 5014
(08) 8440 4747

WA Office: 96 Mulgul Road
Malaga 6090
(08) 9247 8777

The Controll-A-Door-P Diamond
has been tested and complies
with the standards:
AS/NZS 3350.2.95:2000
(incl. Amdt1) & AS/NZS
CISPR 14.1:2003



IMPORTANT SAFETY INSTRUCTIONS FOR INSTALLATION AND USE



These safety alert symbols mean **WARNING** – a personal safety or property damage instruction. This garage door opener is designed and tested to offer reasonable safe service provided it is installed, operated, maintained and tested in strict accordance with the instructions contained in this manual.

WARNING – INCORRECT INSTALLATION CAN LEAD TO SEVERE INJURY. FOLLOW ALL INSTALLATION INSTRUCTIONS.

WARNING – IT IS VITAL FOR THE SAFETY OF PERSONS TO FOLLOW ALL INSTRUCTIONS. SAVE THESE INSTRUCTIONS!



Door must not extend over public footpaths or roads during operation.



*Install only on a properly balanced garage door in good operating condition. Sticking or binding doors must be repaired. Garage doors and components attached to them are under extreme tension. **Do not attempt to repair or adjust them.** Get professional garage door service.*



This unit must be installed in a dry position that is protected from the weather.



Permanently fasten the caution label adjacent to the door control button as a reminder of safe operating procedures.



*After installation and adjustment, ensure that your garage door **reverses** on contact with a 40mm high object placed on the floor. **Repeat monthly and adjust as necessary.***



Watch the moving door and keep people away until it is completely opened or closed. Do not allow children to play with door controls. Keep remote controls away from children.



Use caution when operating manual release if the door is open, since it may fall rapidly if out of balance or if springs are weak or broken. Property damage or serious personal injury could result.



Disconnect electric power to the garage door opener before making repairs or removing covers.



This product is provided with a power supply cord of special design. If damaged, it must be replaced by a cord of the same type obtained from your local B&D distributor, and must be fitted by a specialist.



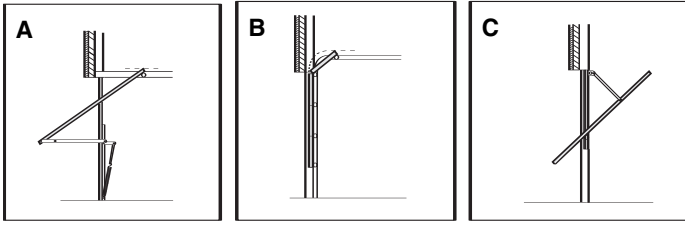
The Protector System must be installed when the force at the edge of the closing door force exceeds 400N (40kg). Excessive force will interfere with the proper operation of the Safety Reverse System or damage the garage door.

TABLE OF CONTENTS

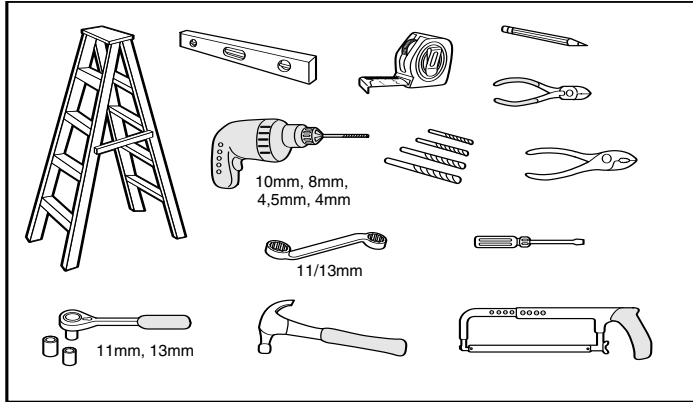
Safety rules:	1	ADJUSTMENT	8-10
Door types:	2	Program the travel limits:	8
Tools needed:	2	Force adjustment:	9
Hardware provided:	2	Test the safety reverse system:	9
Before you begin:	2	Install the door control:	10
Completed Installation:	2	Install the Safety Reversing Sensors (Optional):	11
ASSEMBLY	3-4	Programming the code:	11
Assemble the rail:	3	Operation of your opener:	12
Install the chain/belt:	3	Care of your opener:	12
Insert Chain/belt into rail:	3	Maintenance of your opener:	12
Attach trolley to rail:	3	Problems:	13
Fasten rail to opener and install chain/belt:	3	Special features	14
Attach sprocket cover:	4	Accessories:	15
Assemble header sleeve:	4	Replacement parts:	16-17
INSTALLATION	4-8	Specifications:	18
Position the header bracket:	4	Warranty:	19
Install the header bracket:	5		
Attach the header bracket:	5		
Position the opener:	5		
Hang the opener:	6		
Attach manual release rope & handle:	6		
Connect electric power:	6		
Install the light and lens:	6		
Fasten door bracket:	7		
Connect door arm to trolley:	8		

DOOR TYPES

- A. One-Piece Door with Horizontal Track Only
- B. Sectional Door with Curved Track:
- See Page 5 – Connect Door Arm to Trolley.
- C. J-Style Tilt Door / One-Piece Door without Track

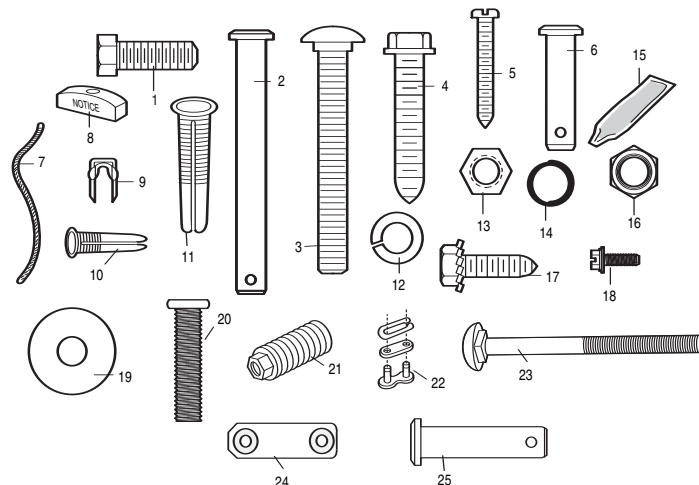


TOOLS NEEDED



HARDWARE PROVIDED

- | | |
|-----------------------------|---|
| (1) Hex Bolt (4) | (15) Rail Grease (1) |
| (2) Clevis Pin (2) | (16) Lock Nut (1) |
| (3) 8mm Carriage Bolt (2) | (17) Metric Tapping Screw (2) |
| (4) Wood Screws (6) | (18) Hex Screw (3) |
| (5) Sheet Metal Screws (2) | (19) Flat Washer (2) |
| (6) Clevis Pin 8 x 25mm (1) | (20) Stop Bolt |
| (7) Rope | (21) Spring Tensioner Nut (1) |
| (8) Handle | (22) Master Link (1) |
| (9) Insulated Staples (10) | (23) Carriage Bolt, Front Bracket (1) |
| (10) Anchor (2) | (24) Transmitter Wall Mount Bracket (1) |
| (11) Concrete Anchor (6) | (25) Clevis Pin 8 x 32mm (1) |
| (12) Lock Washer (6) | |
| (13) Hex Nut (6) | |
| (14) Ring Fastener (4) | |

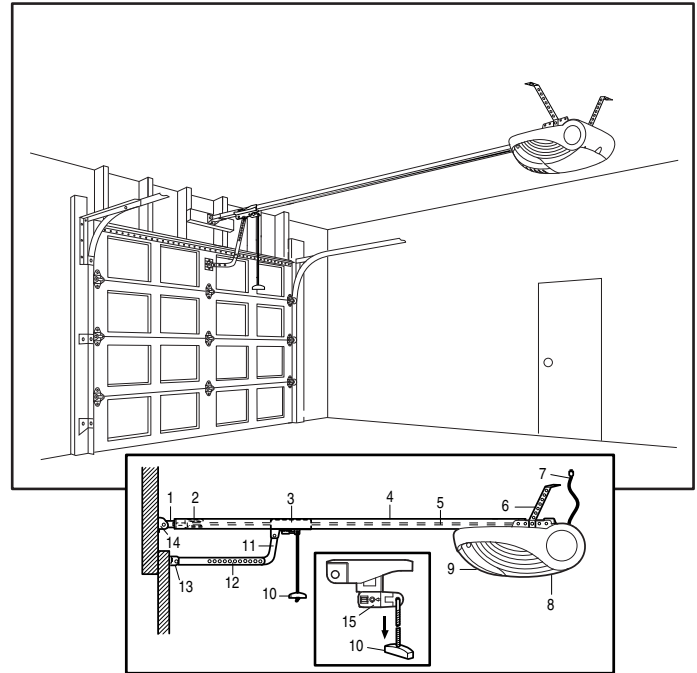


BEFORE YOU BEGIN:

1. Look at the wall or ceiling above the garage door. The header bracket **must** be securely fastened to structural supports.
2. Do you have a finished ceiling in your garage? If so, a support bracket and additional fastening hardware (not supplied) may be required.
3. Do you have an access door in addition to the garage door? If not, Modell T7012 Emergency Access Device is required.

COMPLETED INSTALLATION

As you proceed with the assembly, installation and adjustment procedures in this manual, you may find it helpful to refer back to this illustration of a completed installation.

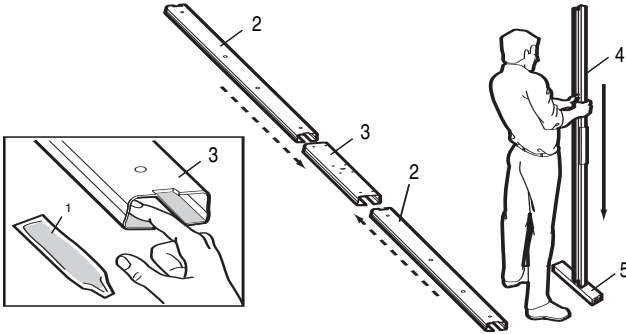


- | | |
|--------------------------|-----------------------------------|
| (1) Header Sleeve | (10) Manual Release Rope & Handle |
| (2) Idler Pulley Bracket | (11) Curved Door Arm |
| (3) Trolley | (12) Straight Door Arm |
| (4) Rail | (13) Door Bracket |
| (5) Chain/Belt | (14) Header Bracket and Plate |
| (6) Hanging Bracket | (15) Trolley Release Arm |
| (7) Power Cord | |
| (8) Opener | |
| (9) Light Lens | |

ASSEMBLY SECTION

ASSEMBLE THE RAIL

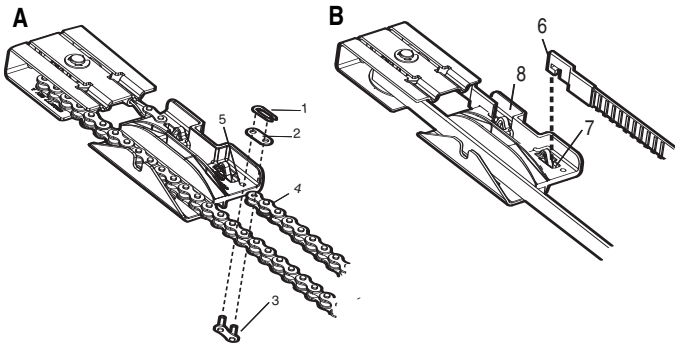
Grease inside edges of rail brace sections using grease (1). Place rail pieces (2) on flat surface for assembly. All four rail sections are interchangeable. Slide rail brace (3) onto rail section. Connect rail by sliding rail brace onto next rail section. Tap rail assembly (4) on piece of wood (5) until rail sections are flush. Repeat with remaining rail sections.



INSTALL THE CHAIN/BELT

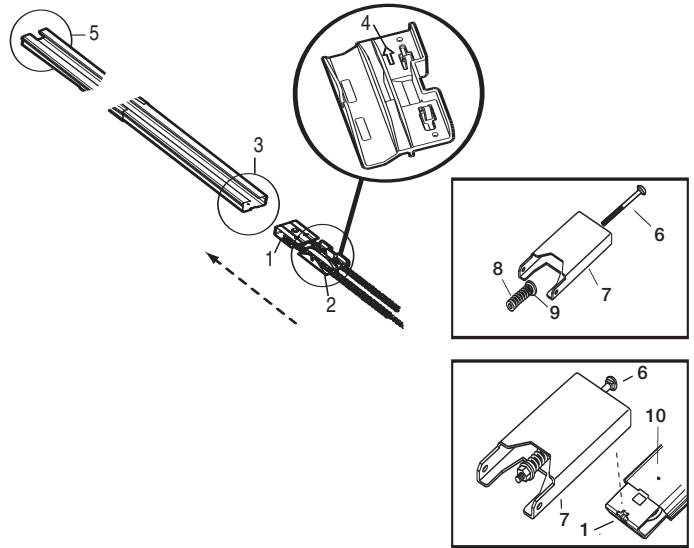
Remove chain/belt from carton and lay chain out on floor (do not allow chain/belt to twist).

- A. Chain:** Push pins of master link bar (3) through chain link (4) and hole in back end of trolley (5). Push cap (2) over pins and onto notches. Slide clip-on spring (1) over cap and onto pin notches until both pins are securely locked in place.
- B. Belt:** Hook the trolley connector (6) into the slot (7) on the trolley (8).



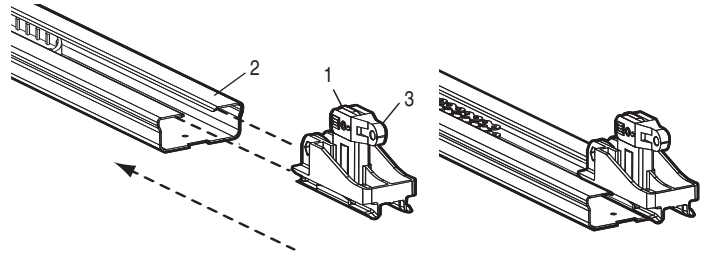
INSERT CHAIN/BELT INTO RAIL & ASSEMBLE HEADER SLEEVE

Slide pulley bracket (1) and inner trolley (2) into back (opener end) of rail assembly (3), be sure to insert pulley bracket as shown with arrow (4) pointing toward front (header end) of rail (5). Push bracket toward front (header end) of rail (5). Insert carriage bolt (6) through header sleeve bracket (7). Loosely thread spring nut (8) and flat washer (9) onto carriage bolt. Insert carriage bolt (6) of header sleeve assembly (7) into bold cut out in pulley bracket (1). Slide header sleeve assembly (7) on to front (header end) of rail (10).



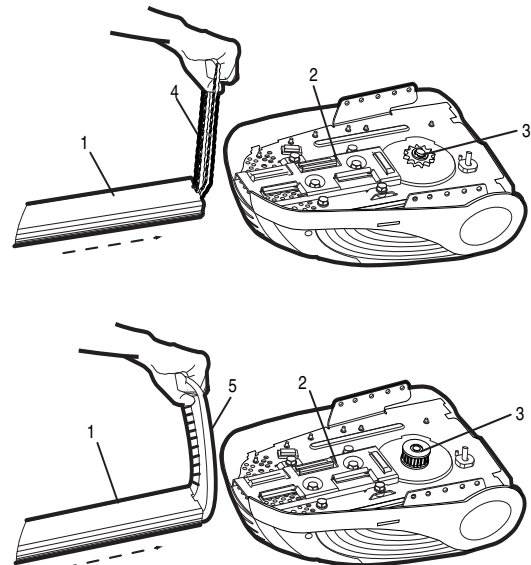
ATTACH TROLLEY TO RAIL

Slide outer trolley (1) into back (opener) end of the rail assembly (2), be sure end with trolley release arm (3) is heading in direction of opener. Slide outer trolley down rail until it engages with inner trolley.



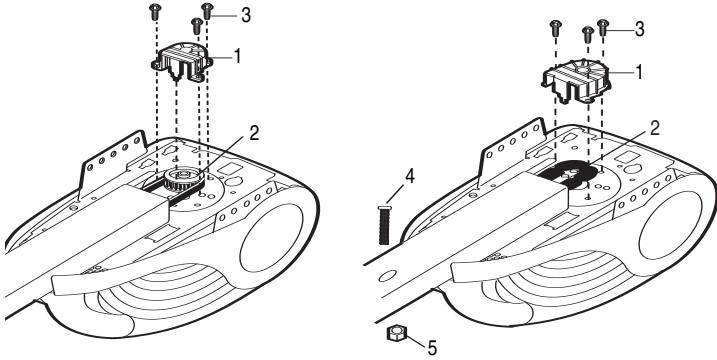
FASTEN RAIL TO OPENER AND INSTALL CHAIN/BELT

Holding chain (4) and belt (5) out of the way, slide rail (1) onto shim (2) until rail is secure. Take the chain/belt and wrap it around the sprocket (3). Make sure the teeth on the sprocket have engaged the chain/belt.



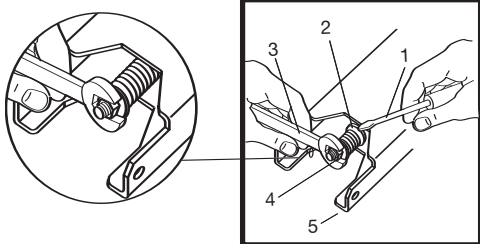
ATTACH SPROCKET COVER

Place sprocket cover (1) on top of the opener (2), secure with screws (3). Install the trolley stop bolt (4), use the lock nut (5) provided.

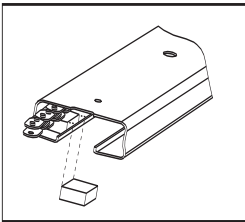


ASSEMBLE HEADER SLEEVE

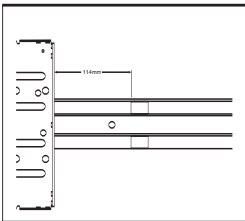
Thread spring nut on carriage bolt until finger tight. Insert a screwdriver tip (1) into one of the slots of the nut ring (2) and brace it firmly against the header sleeve. Place an open end wrench (3) on the square end of the spring nut (4), slightly rotate nut about 1/4 turn clockwise until nut ring (2) is released against header sleeve (5). This sets spring to optimum chain tension. Chain may slip off sprocket if chain/belt is too loose. If chain does slip re-tighten spring nut by turning nut clockwise 1/2 turn. **Do NOT overtighten chain/belt.**



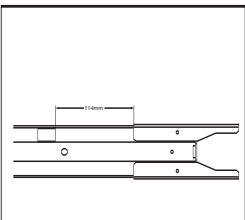
CHAIN NOISE REDUCTION PADS (OPTIONAL)



1. Clean and remove grease from rail in areas where pads will be installed.



2. With chain tensioned, lift up the chain and place noise reduction pads under the chain in orientation shown.



3. Install with adhesive side down allowing pad to stick to rail.

INSTALLATION SECTION

Wear protective goggles when working overhead to protect your eyes from injury.

Disengage all existing garage door locks to avoid damage to the garage door.

To avoid serious personal injury from entanglement, remove all ropes connected to the garage door before installing the operator.

It is recommended that the operator be installed 2.1m (7 feet) or more above the floor where space permits.

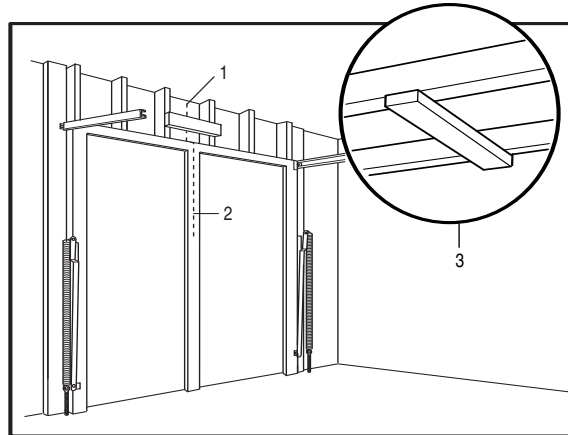
POSITION THE HEADER BRACKET

The header bracket must be rigidly fastened to a structural support of the garage. Reinforce the wall or ceiling with a 40mm board if necessary. Failure to comply may result in improper operation of safety reverse system.

You can attach the header bracket either to the header wall (1) or to the ceiling (3). Follow the instructions which will work best for your particular requirements.

With the door closed, mark the vertical centreline (2) of the garage door. Extend line onto header wall above the door.

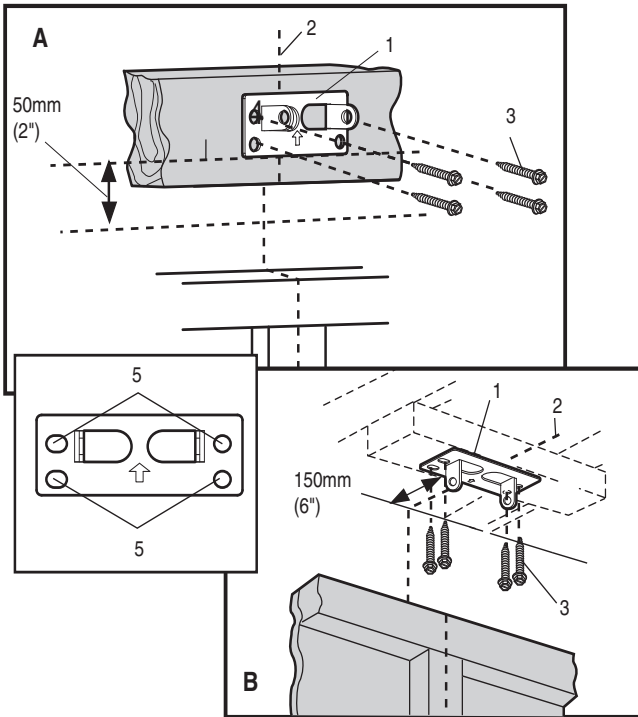
Open door to highest point of travel. Draw an intersecting horizontal line on header wall 40mm above high point to provide travel clearance for top edge of door.



INSTALL THE HEADER BRACKET

NOTE: Refer to vertical centre and horizontal lines created in section "Position the Header Bracket" on page 4 for proper placement of header bracket.

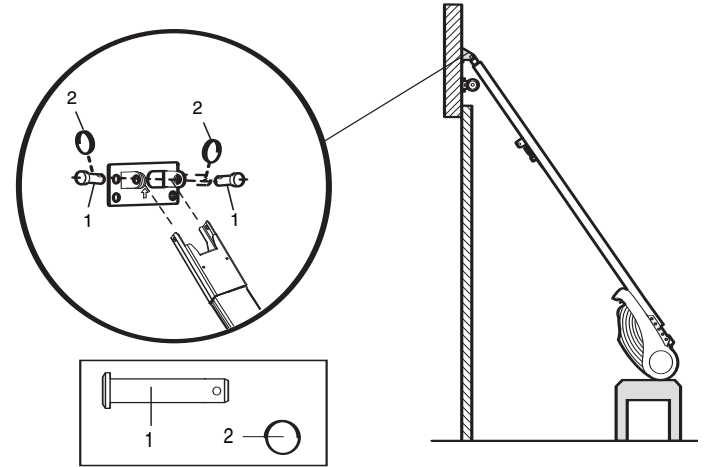
- A. Wall Mount:** Centre the header bracket (1) on the vertical centreline (2) with the bottom edge of the header bracket on the horizontal line (4) (with the arrow pointing toward the ceiling). Mark all of the header bracket holes (5). Drill 4.5mm (3/16") pilot holes and fasten the header bracket with wood screws (3).
- B. Ceiling Mount:** Extend vertical centreline (2) onto the ceiling. Centre the header bracket (1) on the vertical mark no more than 150mm (6") from the wall. Make sure the arrow is pointing toward the opener. Mark all of the header bracket holes (5). Drill 4.5mm (3/16") pilot holes and fasten the header bracket with wood screws (3). For concrete ceiling mount, use concrete anchors provided.



ATTACH RAIL TO HEADER BRACKET

Position opener on garage floor below the header bracket. Use packing material to protect the cover. Raise rail until holes in the header sleeve and holes in the header bracket align. Join with clevis pins (1). Insert ring fasteners (2) to secure.

NOTE: To enable the rail to clear sectional door springs, it may be necessary to lift opener onto a temporary support. The opener must either be secured to a support or held firmly in place by another person.



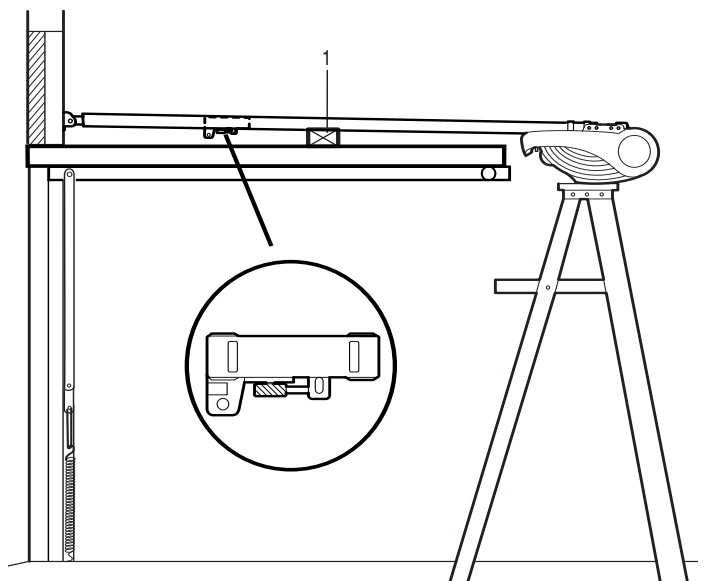
POSITION THE OPENER

SECTIONAL DOOR OR ONE-PIECE DOOR WITH TRACK

NOTE: A 25mm board (1) is convenient for setting an ideal door-to-rail distance (unless headroom is not sufficient).

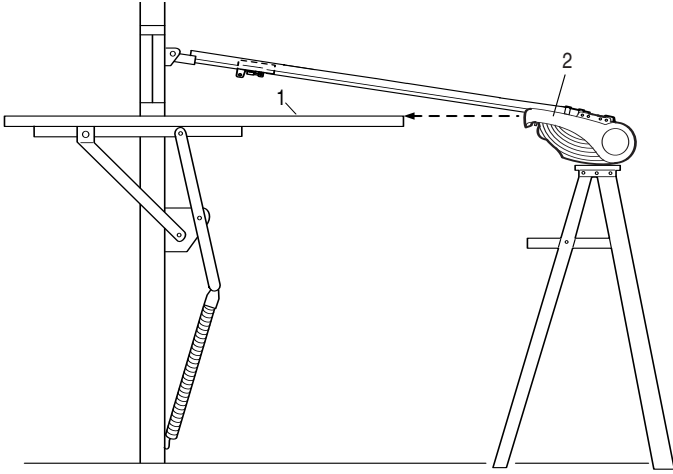
Raise the opener onto a stepladder. Open garage door. Place a 25mm board (1) laid flat on the top section of door near the centreline as shown. Rest the rail on the board.

If the raised door hits the trolley, pull down on the trolley release arm to disconnect the trolley from the chain. The trolley can remain disconnected until connecting door arm to trolley is completed.



J-STYLE TILT DOOR / ONE-PIECE DOOR WITHOUT TRACK

- With the door fully open and parallel to the floor, measure the distance from the floor to the top of the door.
- Using a stepladder as a support, raise the top of the opener to this height.
- The top of the door should be level with the top of the motor unit. Do not position the opener more than 50mm above this point.



HANG THE OPENER

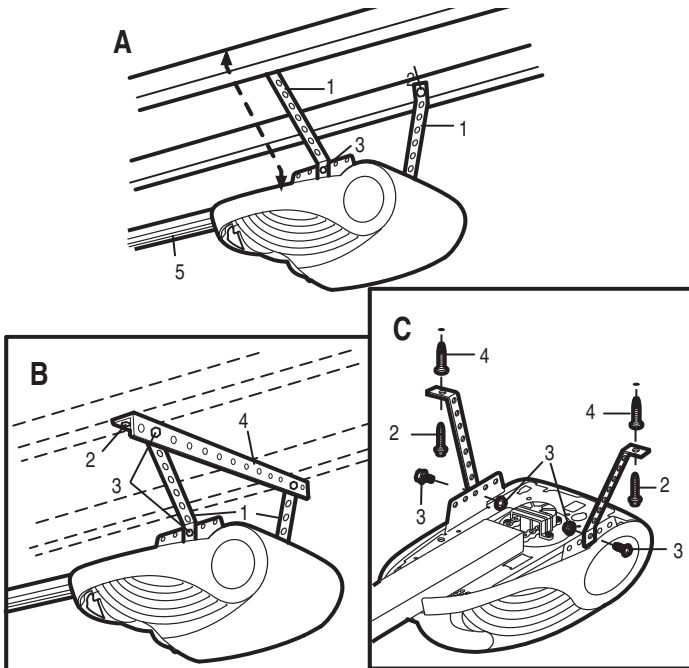
The opener must be securely fastened to a structural support of the garage.

Two representative installations are shown. Yours may be different. Hanging brackets (1) should be angled (Figure A) to provide rigid support. For concrete ceiling mount (Figure B), use concrete anchors (4) provided.

On **each** side of opener measure the distance from the opener to the structural support (or ceiling).

Cut both pieces of the hanging bracket to required lengths. **Do not bend at the bracket holes.** Drill 4.5mm pilot holes in the structural supports (or ceiling). Attach ends of brackets to supports with wood screws (2).

Lift opener and fasten to hanging brackets with screw and lock nut (3). Check to make sure rail is centred over the door. Remove 25mm board. Operate door manually. If door hits the rail, raise header bracket.

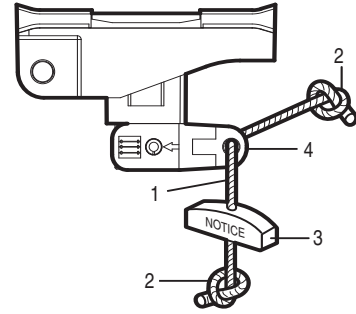


ATTACH EMERGENCY RELEASE ROPE & HANDLE

Thread one end of rope (1) through hole in top of red handle so "NOTICE" reads right side up as shown (3). Secure with an overhand knot (2). Knot should be at least 25mm (1") from end of the rope to prevent slipping.

Thread other end of rope through hole in release arm of the outer trolley (4). Adjust rope length so that handle is 1.8m (6 feet) above the floor. Secure with an overhand knot.

NOTE: If it is necessary to cut rope, heat seal cut end with a match or lighter to prevent fraying.



CONNECT ELECTRIC POWER

Do not attempt to operate your opener until instructed during the travel limits programming procedure. IT WILL NOT RUN. (See Adjustment section.)

Connect the opener to a mains which is properly EARTHED (and as specified by local code).

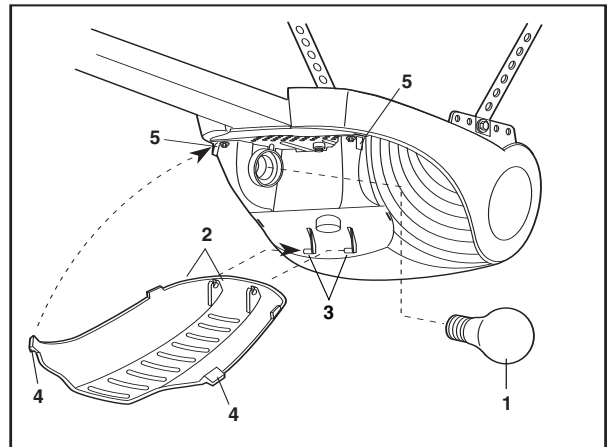
Connect the door opener only to an outlet located near by the opener.

INSTALL THE LIGHT AND LENS

Install a 40 watt maximum (240V, ESRC) light bulb in the socket (1). Hinge the bottom of the lens (2) onto the cover from left of the hinge bars (3) as shown. Close the lens by gently squeezing the upper corners and inserting the tabs (4) into slots on the cover (5).

To change bulb, squeeze the upper corners of the lens to disengage tabs. The lens will drop open, remaining hinged at bottom.

The light will turn on and remain lit for 2-1/2 minutes when power is connected. After 2-1/2 minutes it will turn off.



FASTEN DOOR BRACKET

Follow instructions which apply to your door type as illustrated below or on the following page.

A horizontal reinforcement brace should be long enough to be secured to two or three vertical supports. A vertical reinforcement brace should cover the height of the top panel.

Figure 1 shows one piece of angle iron as the horizontal brace. For the vertical brace, two pieces of angle iron are used to create a U-shaped support. The best solution is to check with your garage door manufacturer for an opener installation door reinforcement kit.

NOTE: Many door reinforcement kits provide for direct attachment of the clevis pin and door arm. In this case you will not need the door bracket; proceed to Step 12.

SECTIONAL DOORS

1. Centre the door bracket on the previously marked vertical centreline used for the header bracket installation. Note correct UP placement, as stamped inside the bracket.
2. Position the top edge of the bracket 50mm - 100mm (2"-4") below the top edge of the door, OR directly below any structural support across the top of the door.
3. Mark, drill holes and install as follows, depending on your door's construction:

Metal or light weight doors using a vertical angle iron brace between the door panel support and the door bracket:

- Drill 4.5mm (3/16") fastening holes. Secure the door bracket (1) using the two 8mm x 13mm (1/4"-14x5/8") self-threading screws (2). (Figure 2A)
- Alternately, use two 8mm (5/16") bolts (3), lock washers (4) and nuts (5). (Figure 2B)

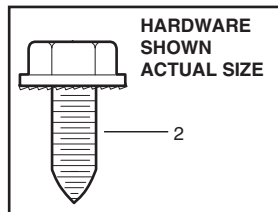
Metal, insulated or light weight factory reinforced doors:

- Drill 4.5mm (3/16") fastening holes. Secure the door bracket (1) using the self-threading screws 8mm x 13mm (2). (Figure 3)

Wood Doors:

- Use top and bottom or side to side door bracket holes. Drill 8mm (5/16") holes through the door and secure bracket with 8mm x 65mm (5/16"x2") (6) carriage bolts, lock washers and nuts. (Figure 4)

NOTE: The 8mm x 13mm (1/4"-14x5/8") (2) self-threading screws are not intended for use on wood doors.



CAUTION

Fibreglass, aluminum or lightweight steel garage doors **WILL REQUIRE** reinforcement BEFORE installation of door bracket. To prevent damage to garage doors reinforce inside of door with angle iron both vertically and horizontally.

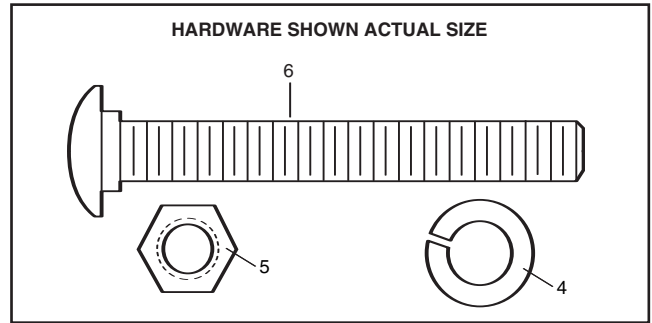


Figure 1

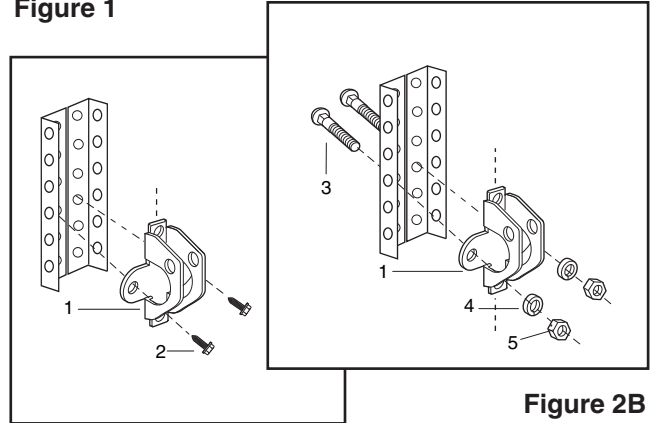


Figure 2A

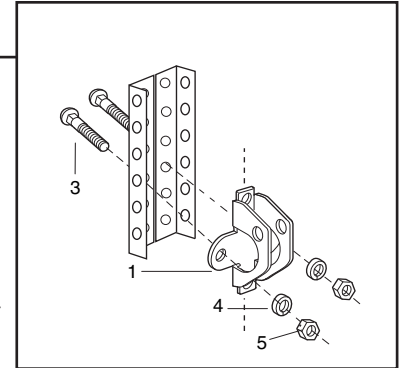


Figure 2B

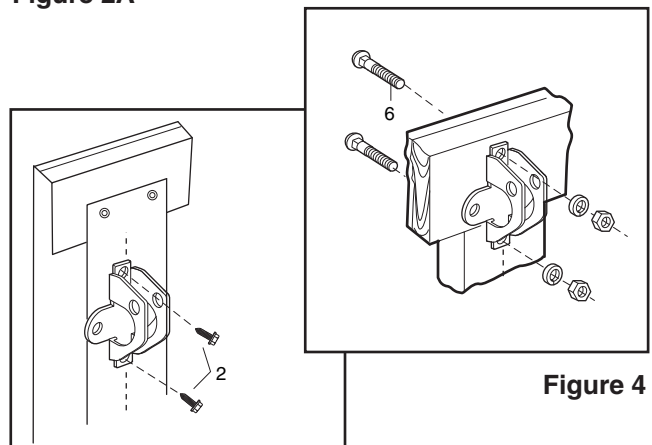


Figure 3

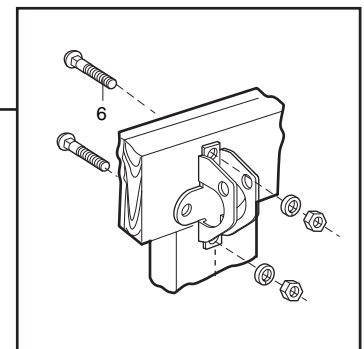


Figure 4

CONNECT DOOR ARM TO TROLLEY

A. Sectional Door Installation:

Close garage door and disengage the trolley as described in A. Slide trolley about 50mm from door. Connect straight door arm (1) to trolley door arm connector hole with a clevis pin (6). Secure with a ring fastener (7). Fasten curved door arm (2) to door bracket with remaining clevis pin and ring fastener. Bring arm sections together. Line up two pairs of holes and join sections with hardware (3, 4, 5). For maximum rigidity, choose holes as far apart as possible.

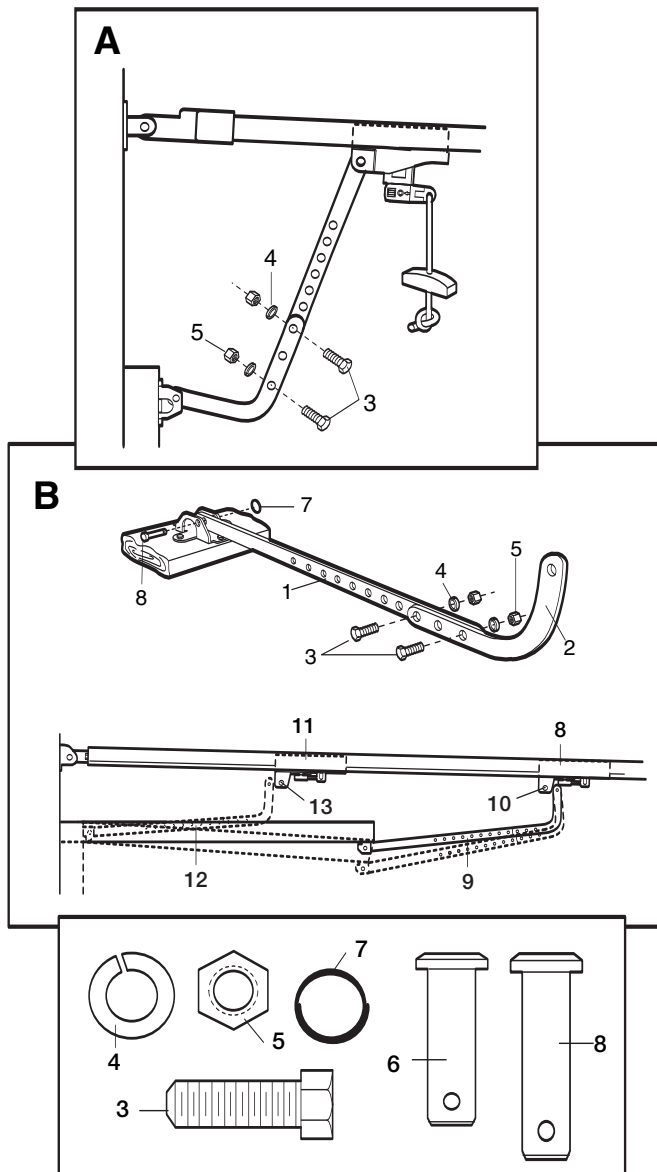
Last, reconnect trolley as described and manually open the door until the trolley engages.

B. One-Piece Door Installation:

Disengage the trolley (*Pull the manual release handle down and back toward the opener*).

Connect straight door arm (1) and curved door arm sections (2) to obtain nearly the longest possible length, with hardware (3, 4, 5). With door closed, connect straight door arm section to door bracket with a clevis pin (6). Secure with a ring fastener (7). Connect curved arm to trolley with remaining clevis pin. Secure with ring fastener.

Last, reconnect trolley (*pull release handle straight down*) and manually open the door until the trolley engages.



ADJUSTMENT SECTION

SETTING THE LIMITS

Travel limits regulate the points at which the door will stop when moving up or down. Follow the steps below to set the limits.

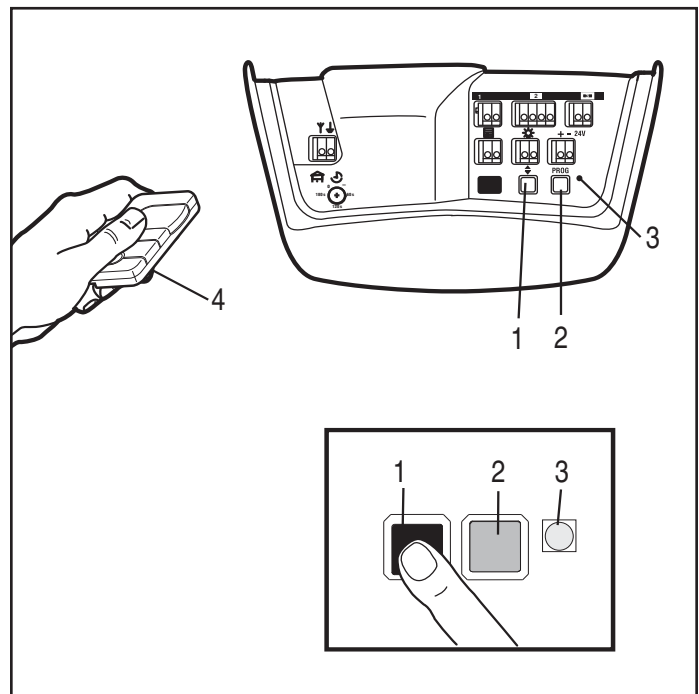
To program the travel limits:

1. Press and hold the black button (1) until the yellow indicator light (3) starts flashing slowly and then release.
2. Push and hold the black button (1) until the door reaches the desired open position. Adjust the position of the door by using the black (1) and orange (2) buttons. Black moves the door UP, orange moves the door DOWN.
3. Push the programmed remote control (4) or push bar on the door control that was shipped with your opener. This sets the full UP (open) position. The door will travel to the floor and reverse back to the UP (open) position. The opener has learned its travel limits.

Check to be sure the door is high enough for your vehicle. Adjust if necessary.

4. The indicator light (3) will stop flashing when the limits have been learned.

NOTE: If the door reverses before it reaches the floor proceed to #15 of the Having a Problem? section and follow the instructions for setting the limits manually. **The force MUST be learned in order to properly complete the setting of the limits.**



FORCE ADJUSTMENT

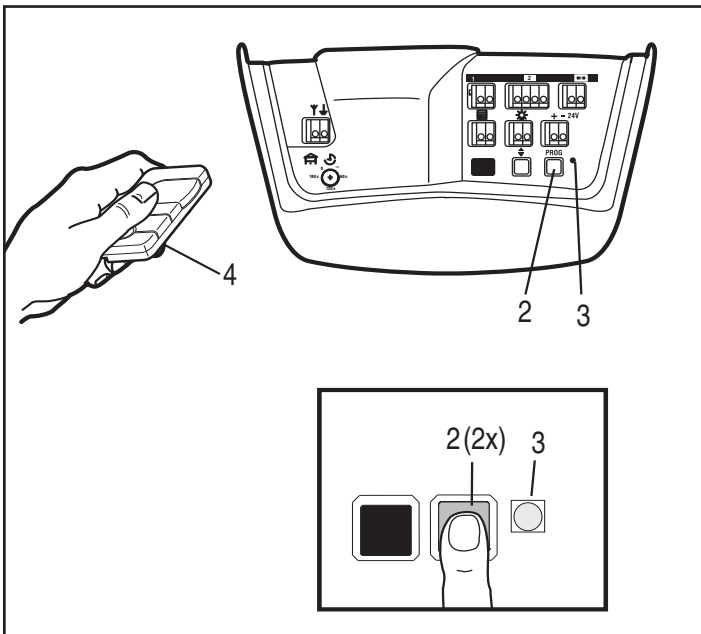
The force, as measured on the closing edge of the door, should not exceed 400N (40kg). If the closing force is measured to more than 400N, a Safety Infrared Reversing Sensor must be installed. See "Install the Safety Infrared Reversing Sensor" on page 11.

The force setting regulates the amount of power required to open and close the door.

1. Locate the orange button (2).
2. Push the orange button (2) twice to enter unit into Force Adjustment Mode. The LED (3) (indicator light) will flash quickly.
3. Push the programmed remote control (4) or push bar on the door control that was shipped with your opener. The door will travel to the DOWN (close) position. Push the remote control (4) again, the door will travel to the UP (open) position.

The LED (3) (indicator light) will stop flashing when the force has been learned.

The door must travel through a complete cycle, UP and DOWN, in order for the force to be set properly. If the unit cannot open and close your door fully, inspect your door to ensure that it is balanced properly and is not sticking or binding.



TEST THE SAFETY REVERSE SYSTEM

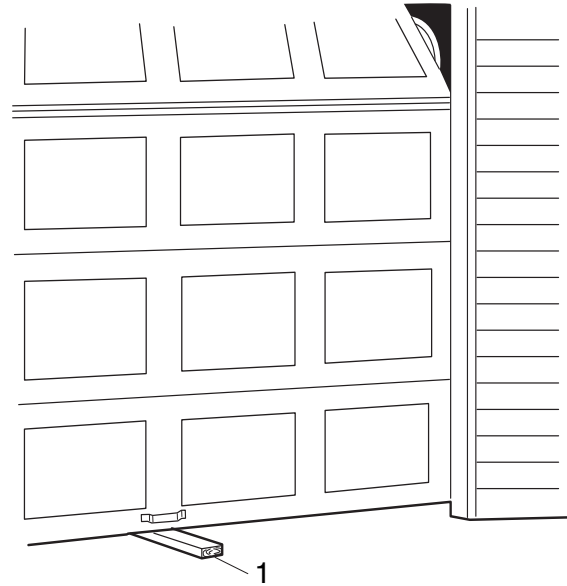


The safety reverse system test is important. Garage door must reverse on contact with a 40mm obstacle laid flat on the floor. Failure to properly adjust opener may result in serious personal injury from a closing garage door. Repeat test once a month and adjust as needed.

Procedure: Place a 40mm obstacle (1) laid flat on the floor under the garage door. Operate the door in the **down** direction. The door must reverse on the obstruction. If the door **stops** on the obstruction, remove obstruction and repeat *Setting the Limits* on page 8. **Repeat test.**

When the door reverses on the 40mm obstacle, remove the obstruction and run the opener through a complete travel cycle. Door **must not** reverse in closed position. If it does, repeat *Setting the Limits and Force* on page 7 and 8 and repeat safety reverse test.

Place 20kg at the centre of the door and ensure that the door will not move up more than 500mm.



INSTALL THE DOOR CONTROL

Locate door control where the garage door is visible, away from door and door hardware and out of the reach of children. Mount at least 1.5m (5 feet) above the floor. Serious personal injury from a moving garage door may result from misuse of opener. Do not allow children to operate the door control or remote control transmitter. Fasten the caution label permanently to the wall near the door control as a reminder of safe operating procedures.

There are 2 screw terminals (1) on the back of the door control (2). Strip about 6mm (1/4") of insulation from bell wire (4). Separate wires enough to connect the white/red wire to RED terminal screw 1 and the white wire to WHT terminal screw 2. Fasten the door control to an inside garage wall with sheet metal screws (3) provided. Drill 4mm (5/32") holes and use anchors (5) if installing into drywall. A convenient place is beside the service door and out of reach of children. Run the bell wire up the wall and across the ceiling to the garage door opener. Use insulated staples to secure wire. Connect the bell wire to the terminals as follows: white/red to red and white to white (5).
There are 2 screw terminals (1) on the back of the door control (2). Strip about 6mm (1/4") of insulation from bell wire (4). Separate wires enough to connect the white/red wire to RED terminal screw 1 and the white wire to WHT terminal screw 2. Fasten the door control to an inside garage wall with sheet metal screws (3) provided. Drill 4mm (5/32") holes and use anchors (5) if installing into drywall. A convenient place is beside the service door and out of reach of children. Run the bell wire up the wall and across the ceiling to the garage door opener. Use insulated staples to secure wire. Connect the bell wire to the terminals as follows: white/red to red and white to white (5).

OPERATION OF THE MULTI-FUNCTION DOOR CONTROL

Press the white square to open or close the door. Press again to stop the door while it is moving.

Light Feature: Press the Light button to turn the opener light on or off. If you turn it on and then activate the opener, the light will remain on for 2-1/2 minutes. Press again to turn it off sooner. The Light button will not control the opener lights when the door is in motion.

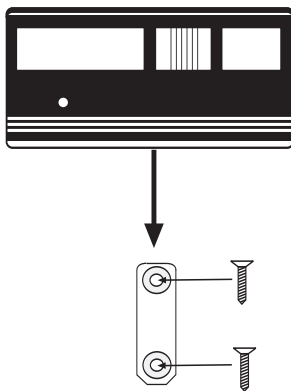
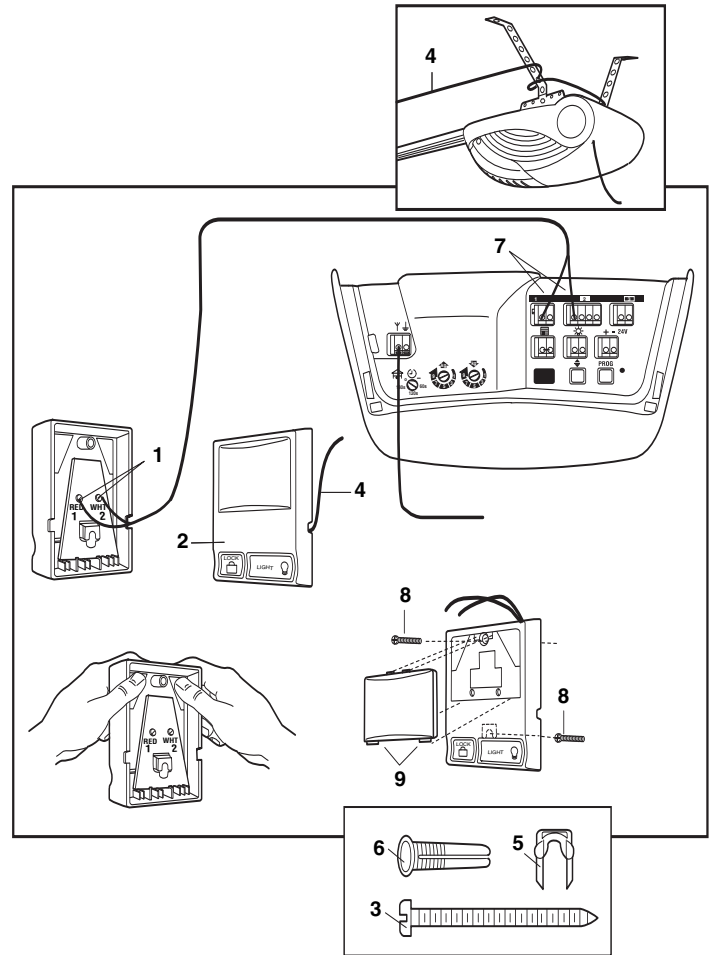
Lock Feature: Prevents operation of the door from portable remote controls. However, the door will open and close from the Door Control push button, the Outside Keylock and the Keyless Entry Accessories.

- **To Activate:** Press and hold the Lock button for 2 seconds. The push button light will flash as long as the Lock feature is on.
- **To turn off:** Press and hold the Lock button again for 2 seconds. The push button light will stop flashing. The Lock feature will also turn off whenever the **PROG** button on the control panel is activated.

REMOTE CONTROL WALL MOUNT (OPTIONAL)

1. Locate wall mount bracket at least 1.5m above the floor.
2. Attach to the wall with 2 x \varnothing 3.5 max flat head screws (not provided).
3. Slide remote control onto wall mount bracket.

NOTE: Tightening the wall mount screws will reduce clearance between bracket and wall.



INSTALL THE SAFETY INFRARED REVERSING SENSOR (See Accessories)

Install this accessory for all installations on doors over 2.5m in height and when the closing force as measured on the bottom of the door is over 400N (40kg).

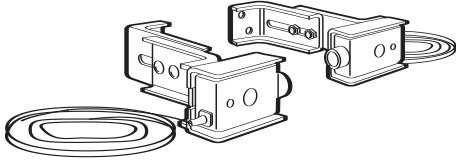
After opener has been installed and adjusted, **The Safety Infrared Reversing Sensor** accessory can be installed. Instructions are included with this accessory.

The Safety Infrared Reversing Sensor provides an additional measure of safety against a small child being caught under a garage door.

It uses an invisible beam which, when broken by an obstruction, causes a closing door to open and prevents an open door from closing and is

strongly recommended for homeowners with young children.

Note: The opener will automatically detect the Safety Infrared Reversing Sensor when it is installed. The opener will not close unless the sensors are aligned and functioning.



PROGRAM YOUR OPENER AND REMOTE

Activate the opener only when door is in full view, free of obstruction and properly adjusted. No one should enter or leave garage while door is in motion. Do not allow children to operate push button(s) or remote(s). Do not allow children to play near the door.

Your garage door opener receiver and remote control transmitter are set to a matching code. If you purchase additional remote controls, the garage door opener must be programmed to accept the new remote code.

Program the Receiver to Match Additional Remote Control Codes:

Using the orange "LEARN" Button:

1. Press and release the orange "learn" button on the opener. The learn indicator light will glow steadily for 30 seconds (1).
2. Within 30 seconds, press and hold the button on the hand-held remote that you wish to operate your garage door (2).
3. Release the button when the opener light blinks. It has learned the code. If the light bulb is not installed, two clicks will be heard (3).

Using the Multi-Function Door Control:

1. Press and hold the button on the hand-held remote that you wish to operate your garage door (4).
2. While holding the remote button, press and hold the LIGHT button on the Multi-Function Door Control (5).
3. Continue holding both buttons while you press the push bar on the Multi-Function Door Control (all three buttons are held) (6).
4. Release buttons when the opener light blinks. It has learned the code. If the light bulb is not installed, two clicks will be heard (7).

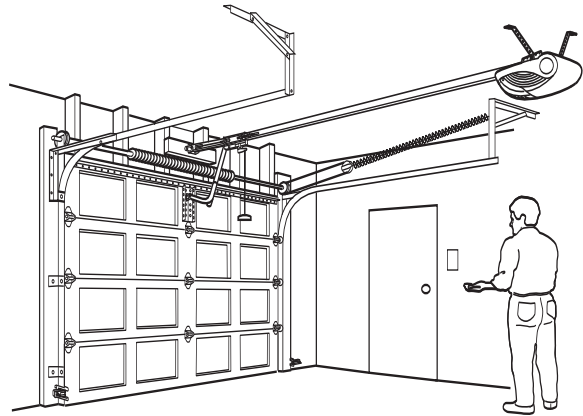
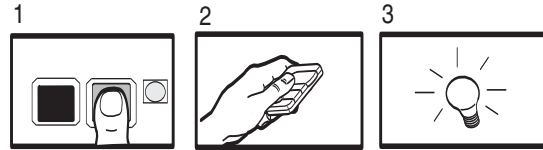
Now the opener will operate when the remote control push button is pressed. If you release the remote control push button before the opener light flashes, the opener has not learned the code.

To Erase all Remote Control Codes:

To deactivate any unwanted remote, first erase all codes: Press and hold the orange "learn" button on opener until the learn indicator light goes out (approximately 6 seconds). All previous codes are now erased. Reprogram each remote or keyless entry you wish to use.

3-Channel Remote:

The large button is factory programmed to operate your opener. Additional buttons on any 3-channel remote or mini-remote can be programmed to operate this or other B&D garage door openers.



OPERATION OF YOUR OPENER

Your opener can be activated by any of the following devices:

- **The wall mounted door control.** Hold the push button down until door starts to move.
- **The Outside Keylock or Keyless Entry System** (if you have installed either of these accessories).
- **The Remote Control Transmitter.** Hold the push button down until the door starts to move.
- **The left push button on the control panel,** when the opener is not in a learn or limit setting mode (the indicator light must not be on).

OPENING THE DOOR MANUALLY

Door should be fully closed if possible.

The door can be opened manually by pulling the trolley release handle down and back (toward the opener). To reconnect the trolley, pull the release handle straight back. It will reconnect on the next up or down operation.

Do not use the manual release handle to pull the door open or closed.

WHEN THE OPENER IS ACTIVATED BY THE REMOTE CONTROL OR WALL MOUNTED DOOR CONTROL:

1. If open, the door will close. If closed, the door will open.
2. If closing, it will reverse
3. If moving, the door will stop.
4. If the door has been stopped while moving, it will next move in the opposite direction.
5. If an obstruction is encountered while closing, the door will reverse.
6. If an obstruction is encountered while opening, the door will stop.
7. The optional Safety Infrared Reversing Sensor uses an invisible beam which, when broken by an obstruction, causes a closing door to open and prevents an open door from closing. It is **STRONGLY RECOMMENDED** for homeowners with young children.

The opener light will turn on: 1) when opener is initially plugged in; 2) when the power is interrupted; 3) when the opener is activated.

The light turns off automatically after 2-1/2 minutes. Bulb size is 40 Watts maximum (240V, ESRC).

CARE OF YOUR OPENER

When properly installed, opener will provide high performance with a minimum of maintenance. The opener does not require additional lubrication. Lubricate springs and have your door serviced by a professional service technician to maintain good operating condition.

Limit and Force Adjustments: These adjustments must be properly set and checked when the opener is installed. *Weather conditions may cause some minor changes in the door operation, requiring some re-adjustments, particularly during the first year of operation.*

Refer to the limit and force adjustments on page 4. Follow the instructions carefully and **repeat the safety reverse test after any adjustment.**

Remote Control Transmitter: The lithium batteries should produce power for up to five years. To replace batteries, use a screwdriver blade to pry open the case along the side where "Open" is stamped on the back. Insert batteries positive side down. To replace cover, snap shut along both sides.

Do not dispose of old batteries with household waste. Take batteries to a proper disposal centre.

Additional remotes can be purchased at any time for use in all vehicles using garage. Refer to Accessories. The receiver must be programmed to operate with any new remote.

MAINTENANCE OF YOUR OPENER

Once a Month:



Manually operate door to check for imbalance or binding. Examine your installation, cables, springs and mountings for wear or damage. Call for professional garage door service if necessary. To avoid possible injury, do not use until repaired.

- *Repeat safety reverse test.* Adjust if necessary.
- *Check to be sure door opens and closes fully.* Adjust Limits and/or Force if necessary.

Once a Year:

Oil door rollers, bearings and hinges. The opener does not require additional lubrication. Do not grease the door tracks. Refer to door manufacturer's maintenance instructions.

HAVING A PROBLEM?

1. Opener doesn't operate from either door control or remote:

- Does the opener have electric power? Plug lamp into outlet. If it doesn't light, check the fuse box or the circuit breaker. (Some outlets are controlled by a wall switch.)
- Have you disengaged all door locks? Review installation instruction warnings on page 1.
- Is there a build-up of ice or snow under door? The door may be frozen to ground. Remove any obstruction.
- The garage door spring may be broken. Have it replaced.

2. Opener operates from remote but not from door control:

- Is door control button lit? If not, remove the bell wire from the opener terminals. Short the red and white terminals by touching both terminals at the same time with a piece of wire. If the opener runs, check for a faulty wire connection at the door control, a short under the staples, or a broken wire.
- Are wiring connections correct? Review page 7.

3. Door operates from door control but not from remote:

- Replace battery if necessary.
- If you have two or more remotes and only one operates, review Program Your Opener and Remote on page 9.
- Is the door control button flashing? The opener is in lock mode. If you have a Multi-Function Door Control, push and hold the Lock button for 2 seconds. The door control button will stop flashing.

4. Remote has short range:

- Is battery installed?
- Change the location of the remote control on the car.
- A metal garage door, foil-backed insulation or metal siding will reduce the transmission range.

5. Door reverses for no apparent reason and opener light doesn't blink:

- Is something obstructing the door? Pull manual release handle. Operate door manually. If it is unbalanced or binding, call for professional garage door service.
- Clear any ice or snow from garage floor area where garage door closes.
- Repeat Setting Limits and Force, see pages 7 and 8. Repeat safety reverse test after adjustment is complete.

6. Door reverses for no apparent reason and opener light blinks for 5 seconds after reversing:

Check The Safety Infrared Reversing Sensor (if you have installed this accessory). If the light is blinking, correct alignment.

7. Opener noise is disturbing in living quarters of home:

If operational noise is a problem because of proximity of the opener to the living quarters, Vibration Isolator Kit 062155 can be installed. This kit was designed to reduce the "sounding board effect" and is easy to install.

8. The garage door opens and closes by itself:

Make sure remote push button is not stuck "on".

9. Door stops but doesn't close completely:

Repeat Setting the Limits, see page 7.

Repeat safety reverse test after any adjustment of door arm length, close force or down limit.

10. Door opens but won't close:

- Check The Safety Infrared Reversing Sensor (if you have installed this accessory). If the light is blinking, correct alignment.
 - If opener light does not blink and it is a new installation, repeat Setting the Limit and Force on pages 7 and 8.
- Repeat the safety reverse test after the adjustment is complete.

11. Opener light does not turn on:

Replace light bulb (230V/40W maximum). Replace burned out bulbs with rough service light bulbs.

12. Opener strains:

Door may be unbalanced or springs are broken. Close door and use manual release rope and handle to disconnect trolley. Open and close door manually. A properly balanced door will stay in any point of travel while being supported entirely by its springs. If it does not, call for professional garage door service to correct the problem.

13. Opener motor hums briefly, then won't work:

- Garage door springs are broken. SEE ABOVE.
- If problem occurs on first operation of opener, door is locked. Disable door lock.

Repeat safety reverse test after adjustment is complete.

14. Opener won't activate due to power failure:

- Pull manual release rope and handle down to disconnect trolley. Door can be opened and closed manually. When the power is restored, pull the manual release handle down and toward opener. The next time the opener is activated, the trolley will reconnect.
- The Outside Quick Release accessory (if fitted) disconnects the trolley from outside the garage in case of power failure.

15. Setting the limits manually:

1. Press and hold the black button until the yellow indicator light starts flashing slowly then release.
2. Adjust the position of the door by using the black and orange buttons. Black moves the door UP (open) and orange moves the door DOWN (close).

Check to be sure the door opens high enough for your vehicle.

3. Push the remote control or door control. This sets the UP (open) limit and begins closing the door. **Immediately press either the orange or the black button.** The door will stop. Adjust the desired DOWN (close) limit position using the black and orange buttons. Check to be sure the door is fully closed without applying excessive pressure on the rail (rail should not bow upwards and the chain/belt should not sag or droop below the rail). Push the remote control or door control. This sets the DOWN (close) limit and begins opening the door.

NOTE: If neither the black or the orange button is pressed, the door will reverse off the floor and the DOWN travel limit will be set automatically.

4. Open and close the door with the remote control or door control 2 or 3 times.
 - If the door does not stop in the desired UP (open) position or reverses before the door stops at the DOWN (close) position, repeat Setting the Limits and Force on pages 7 and 8.
 - If the door stops in both the desired UP (open) and DOWN (close) positions, proceed to *Test the Safety Reversal System*.

ACCESSORIES

(1) Model	62266	1 Channel Remote
(2) Model	62171	2 Channel Remote
(3) Model	62170	3 Channel Remote
(4) Model	62162	3 Channel Keyring Remote
(5) Model	62173	Wireless Keyless Entry Keypad
(6) Model	62130	Multi-Function Door Control Panel
(7) Model	62228	Push Button Wall Unit
(8) Model	T7012	Emergency Key Release
(9) Model	62153	The Safety Infrared Reversing Sensor

WIRING INSTRUCTIONS FOR ACCESSORIES

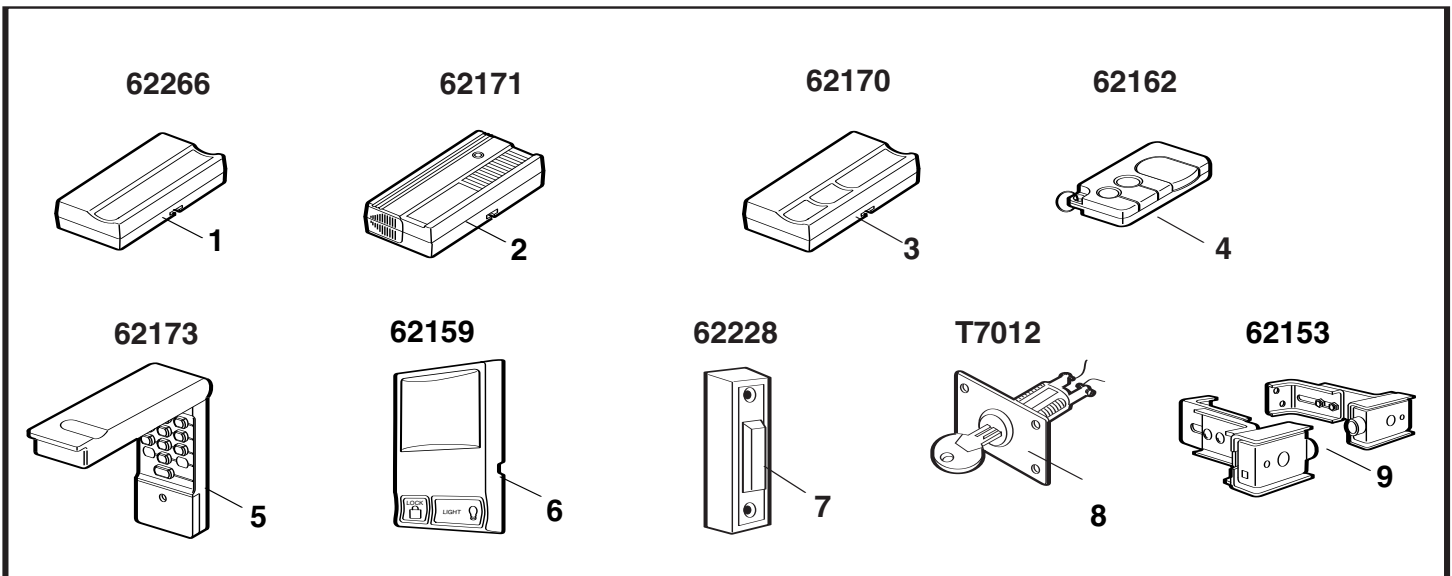
Lighted Push Button: To opener terminals: Red-1 and White-2.

Outside Keylock: To opener terminals: Red-1 and White-2.

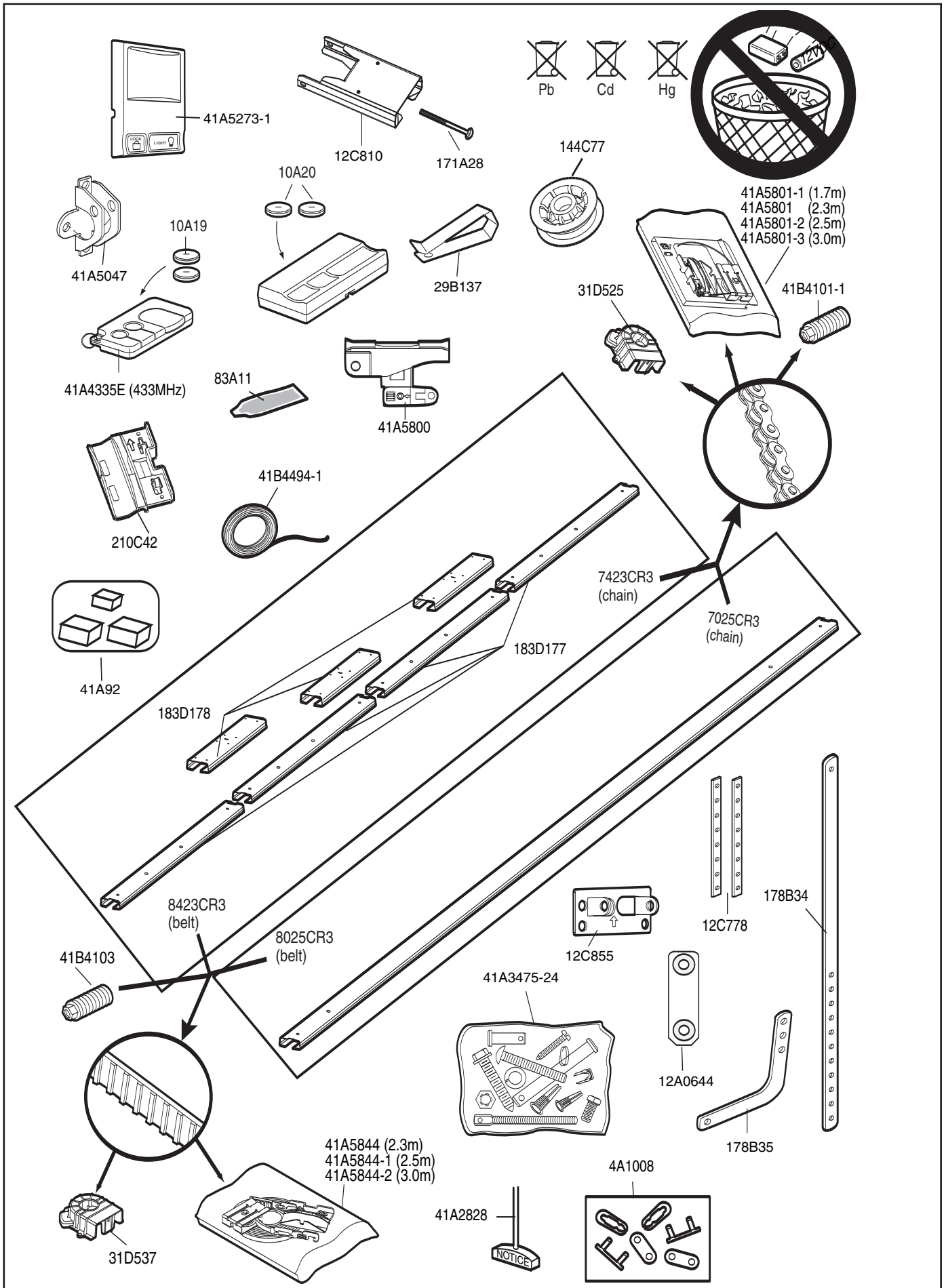
Safety Infrared

Reversing Sensor: To opener terminals: White-2 and Black-3.

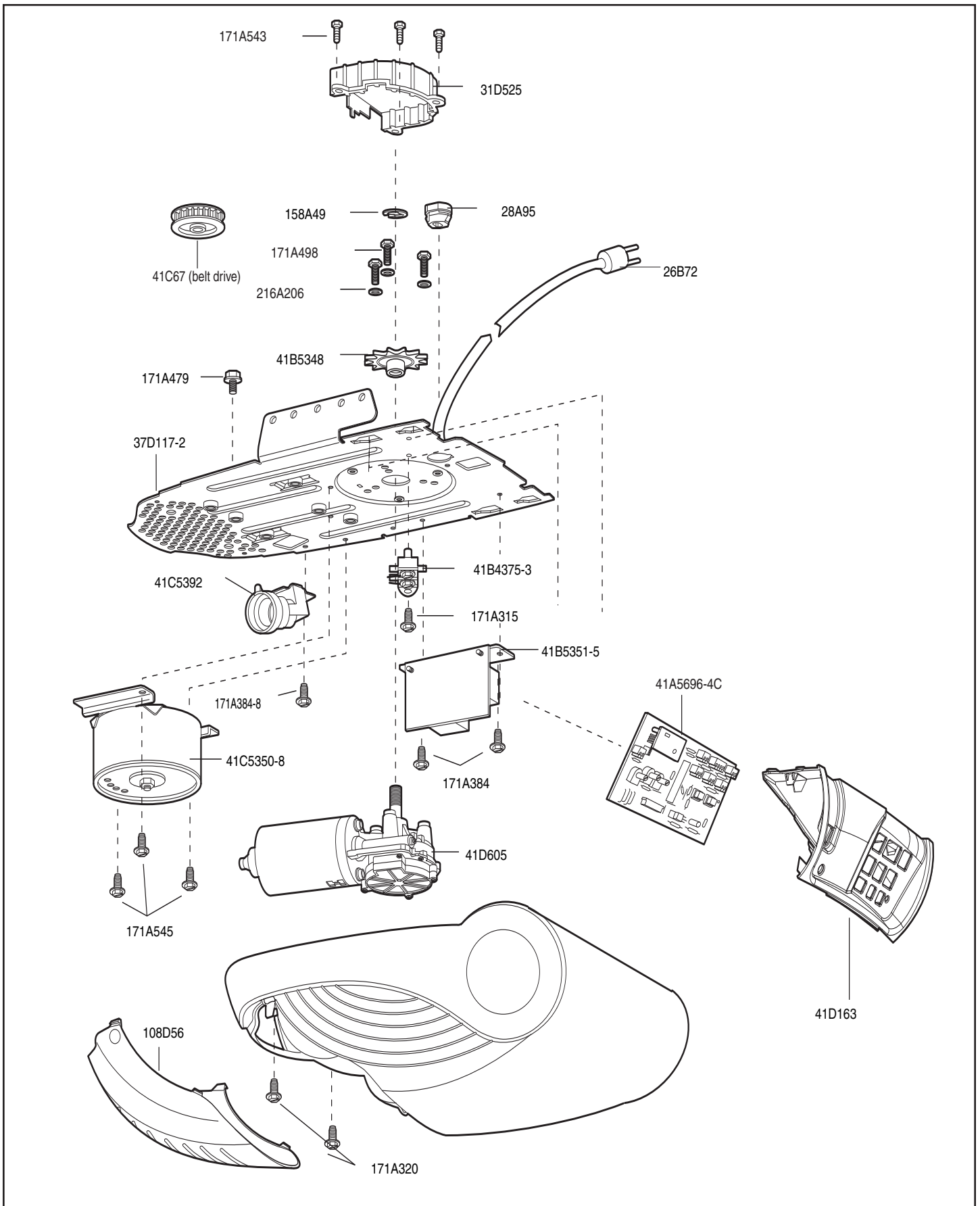
Door Control Panel: To opener terminals: Red-1 and White-2.



REPLACEMENT PARTS



REPLACEMENT PARTS



SPECIFICATIONS

Input Voltage230-240V, 50Hz
Max. Pull Force800N
Power165W
Normal Torque8Nm
Stand-by power
rating @ 230V6W

Motor

TypeDC Permanent lubrication
Volts24 V DC

Drive Mechanism

Length of TravelAdjustable to 3m
Travel Rate12-17cm per second nom., 20-100% ramp
Lamp1x230V/40W/E27 socket, on when door
starts, off 2-1/2 minutes after stop.
Door LinkageAdjustable door arm. Pull cord trolley
release.

Safety

PersonalPush button and stop. Push button and
automatic reversal in **down** direction. Push
button and automatic stop in **up** direction.
Electronic.....Automatic force adjustment
Electrical.....Low voltage push button wiring.
Limit Adjustment.....Electronic, Semi and Fully Automatic.
Start Circuit.....Low voltage push button circuit.

Dimensions

Length (Overall).....3.2m (with standard rail)
Headroom Required ...30mm
Hanging Weight.....7.5kg

Receiver Code Registers

Billion Code32
Dip Switch1 (optional)
Keypad1 (optional)
Operating Frequency..433.92MHz

WARRANTY

Controll-A-Door® Automatic Garage Door Opener

1. Definitions

- 'B&D' means
- (a) in Australia - B&D Doors of 17 Oasis Court Clontarf, Queensland 4019
 - (b) in New Zealand - B&D Doors (NZ) Ltd of 70 Allens Road East Tamaki Auckland, which is a subsidiary of Alesco NZ Ltd.
- 'Purchaser' means the purchaser of the Opener.
'Opener' means the 'Controll-A-Door Automatic Garage Door Opener'
'Approved Distributor' means an approved B&D distributor of the Opener.
'Major Components' means all components of the Opener that make up the power head (including any track assembly, if any), that is attached to a garage door.
'Ancillary Components' means all components of the Opener which are not Major Components.
'Manufacturer's Written Instruction Manual' means the instruction manual provided with the Opener.
2. This warranty applies to every sale of an Opener to a Purchaser by B&D or its Approved Distributor, and is the only warranty given on behalf of B&D.
3. B&D warrants that it will, at its option, either repair or replace any defects:
- (i) in materials or workmanship in the Opener, subject to the following:
 - (a) for Major Components of the Opener that are installed by B&D or an Approved Distributor the warranty shall be valid for a period of sixty (60) months;
 - (b) for Major Components of the Opener that are not installed by B&D or an Approved Distributor the warranty shall be valid for a period of twelve (12) months, provided that all costs of disconnection, reinstallation and freight shall be borne by the Purchaser.
 - (c) for Ancillary Components of the Opener the warranty shall be valid for a period of twelve (12) months. Globes and batteries excluded.
 - (ii) in installation for a period of twelve (12) months from the date of installation where the Opener has been installed by B&D or its Approved Distributor.
4. The warranties provided in clause 3(i) shall only apply to an Opener which is being used under normal use and service in accordance with the Manufacturer's Written Instruction Manual and are limited to the repair or replacement, at B&D's option, of any defective Opener or parts thereof.
5. The warranty provided in clause 3(i) shall apply from:
- (i) the date of delivery of the Opener by B&D; or
 - (ii) the date of installation of the Opener by B&D or one of its Approved Installers; or
 - (iii) the date of purchase of the Opener by the Purchaser; whichever is the later.
6. (i) Where the Opener has been sold to the Purchaser by B&D, the Purchaser shall make all warranty claims hereunder directly with B&D;
(ii) Where the Opener has been sold to the Purchaser by an Approved Distributor, the Purchaser shall make all warranty claims hereunder directly with the Approved Distributor.
7. The Purchaser will pay for any service call made by B&D or an Approved Distributor where such a call is made for the purpose of adjustment (as described in the Manufacturers Written Instruction Manual) and not for rectification of a defect pursuant to the warranty hereunder.
8. (i) The Purchaser shall be responsible for any expense incurred by B&D or an Approved Distributor in ensuring that the Opener is readily accessible for any repair work carried out under this warranty.
(ii) Where an Opener is installed outside a capital city metropolitan area and a warranty claim is made pursuant to this warranty, any travelling expenses and costs of transporting the Opener, incurred by B&D or its Approved Distributor, shall be borne by the Purchaser.
9. Subject to paragraph 12 hereof;
- (i) the obligations of B&D under this warranty are limited to those contained herein and such warranties are expressly in lieu of all other warranties, express or implied, including any implied warranty of merchantability or fitness for a particular purpose and notwithstanding any course of dealing between the parties or custom and usage in the trade to the contrary.
 - (ii) B&D shall not be subject to nor incur and the Purchaser releases B&D from any claim or liability (including consequential loss or damage and loss or use or profit) by reason of delay, defective or faulty materials or workmanship, negligence or any act, matter or thing done, admitted or omitted by B&D.

10. Subject to Clause 12 hereof, this warranty does not extend to and B&D will be relieved of all obligations, responsibilities and liabilities (direct or consequential) in the event that defects in manufacture of the Opener are directly or indirectly in the opinion of B&D due to or result from:
- (i) being fitted to any door or other closing device which is not of the type or condition defined in the Manufacturers Written Instruction Manual as suitable for installation of the Opener.
 - (ii) Lack of proper maintenance or care of the Door and Opener. Door must be serviced in accordance to the door's care and maintenance instructions. Failure to maintain the door may result in the opener warranty being voided.
 - (iii) Incorrect and unreasonable use.
 - (iv) Faulty installation or adjustment of the Opener or door to which the Opener is connected where such installation or adjustment is not carried out by B&D or one of its Authorised B&D Distributors.
 - (v) Failure to observe any instructions or directions provided with the Opener or given to the Purchaser by B&D or an Approved Distributor.
 - (vi) Modifications or repairs made or attempted to be made by any unauthorised person.
 - (vii) Faulty electrical wiring of structures to which the Opener is affixed.
 - (viii) Radio (including citizen band transmissions) or other electronic interference.
 - (ix) Water damage, including effects from rust and corrosion.
 - (x) Use with doors locked.
 - (xi) Operation of the opener with excessively high opening or closing force settings.
11. The warranty contained in Clause 3 does not cover batteries or globes and B&D shall not be liable for any defect, malfunction or failure of such items.
12. It is expressly provided that the warranties or any terms and conditions of them or other statement contained in this document or other literature given to the Purchaser shall not be read or applied so as to purport to exclude, restrict or modify or have the effect of excluding, restricting or modifying the application in relation to the supply of the Opener of all or any of the provisions of Divisions 2 and 2A of Part V of the Trade Practices Act, 1974, or the Consumer Guarantees Act 1993 if the purchase is a 'consumer' and purchased the opener in New Zealand, ("The Act") as amended or the exercise of a right conferred by such a provision or any other condition or warranty implied by any relevant State Act or Territorial Ordinance or by the general law and which by law cannot be excluded, restricted or modified provided that to the extent that the Act permits B&D to limit its liability for a breach of condition or warranty implied by the Act, B&D's liability for such breach shall be limited to the payment of the cost of replacing the Opener or acquiring an equivalent Opener or repairing the Opener.
13. This warranty shall be governed by and construed in accordance with Australian law if the opener was purchased in Australia, or New Zealand law if the opener was purchased in New Zealand.
14. Upon making a claim under this warranty the purchaser must produce proof of the date of purchase, together with the warranty certificate set out below:

Purchased from: _____
Installed by: _____
Installed on (date): _____

The Purchaser shall complete this certificate and keep it together with a copy of the receipt of purchase in a safe place – production of such information will assist the handling of a claim made under this warranty.

The B&D Diamond and Controll-A-Door are registered Trademarks of B&D Australia Pty Ltd., an Alesco company. ABN 25010473971.